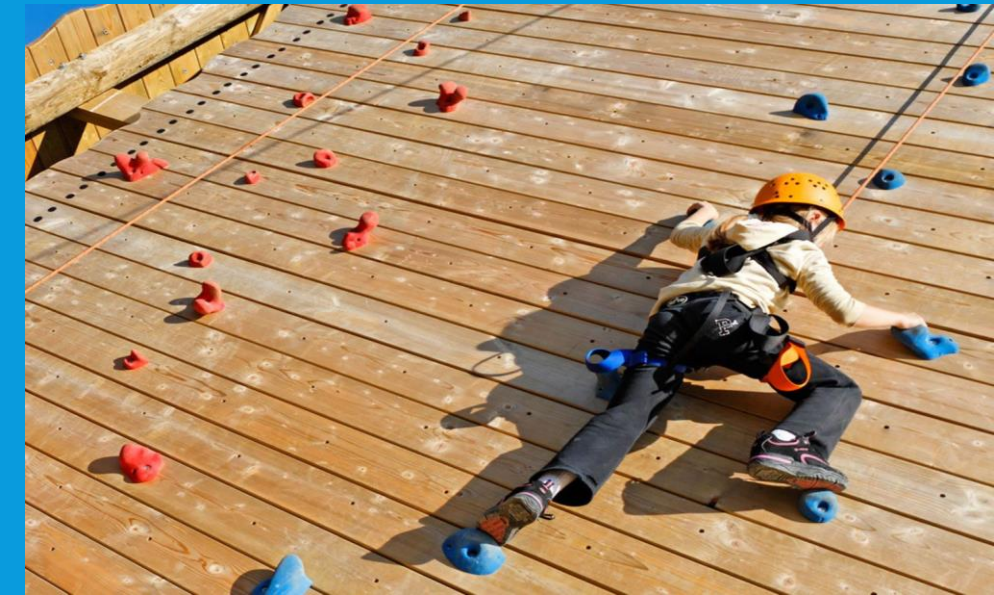


YR 6 RESIDENTIAL WEEK

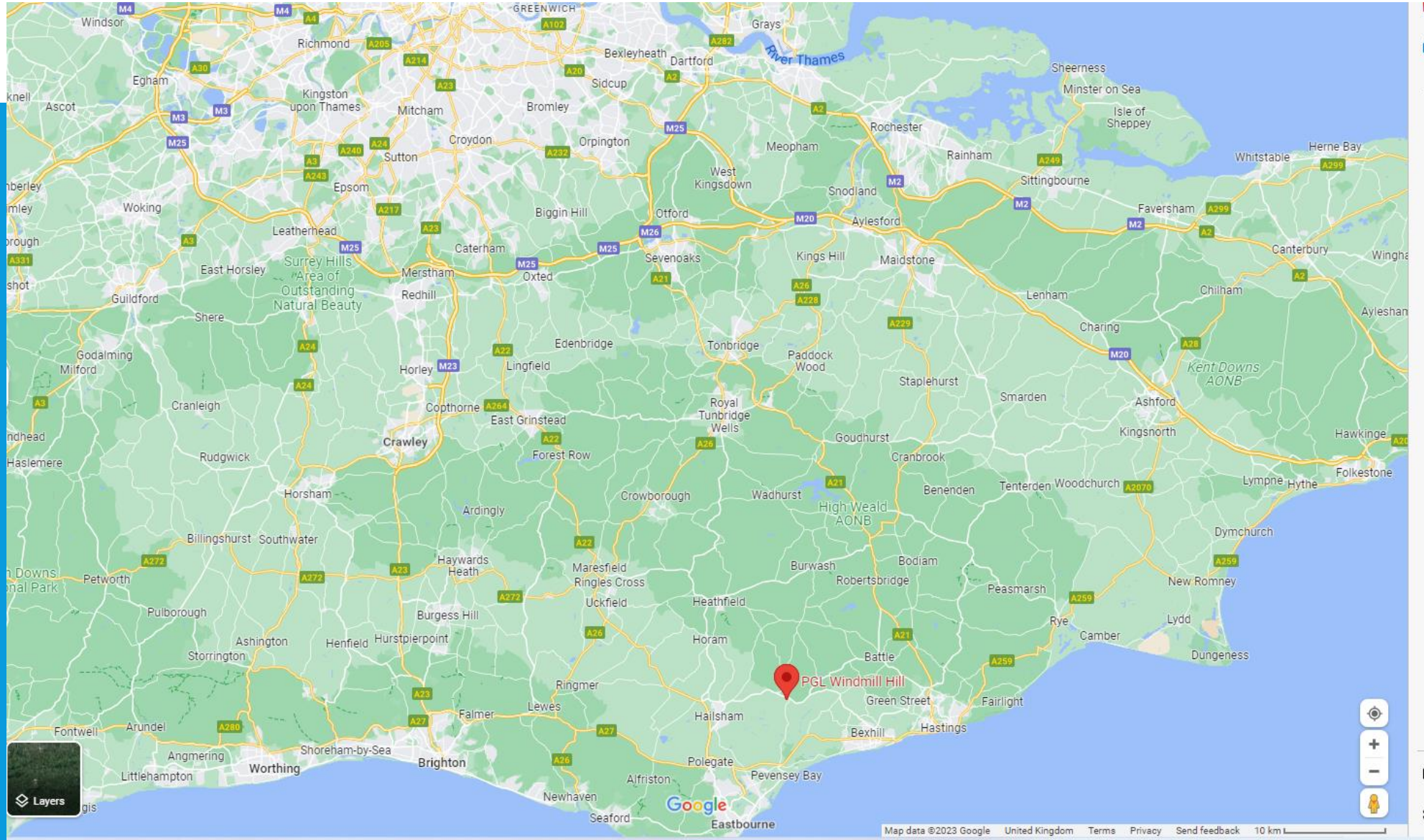
Mon 3rd July – Fri 7th July 2023
(Wed – Fri at PGL Windmill Hill)

BENEFITS OF RESIDENTIAL TRIP

- 'Rite of passage'
- Promote independence
- Life skills
- Reward for year(s) of hard work



PGL WINDMILL HILL



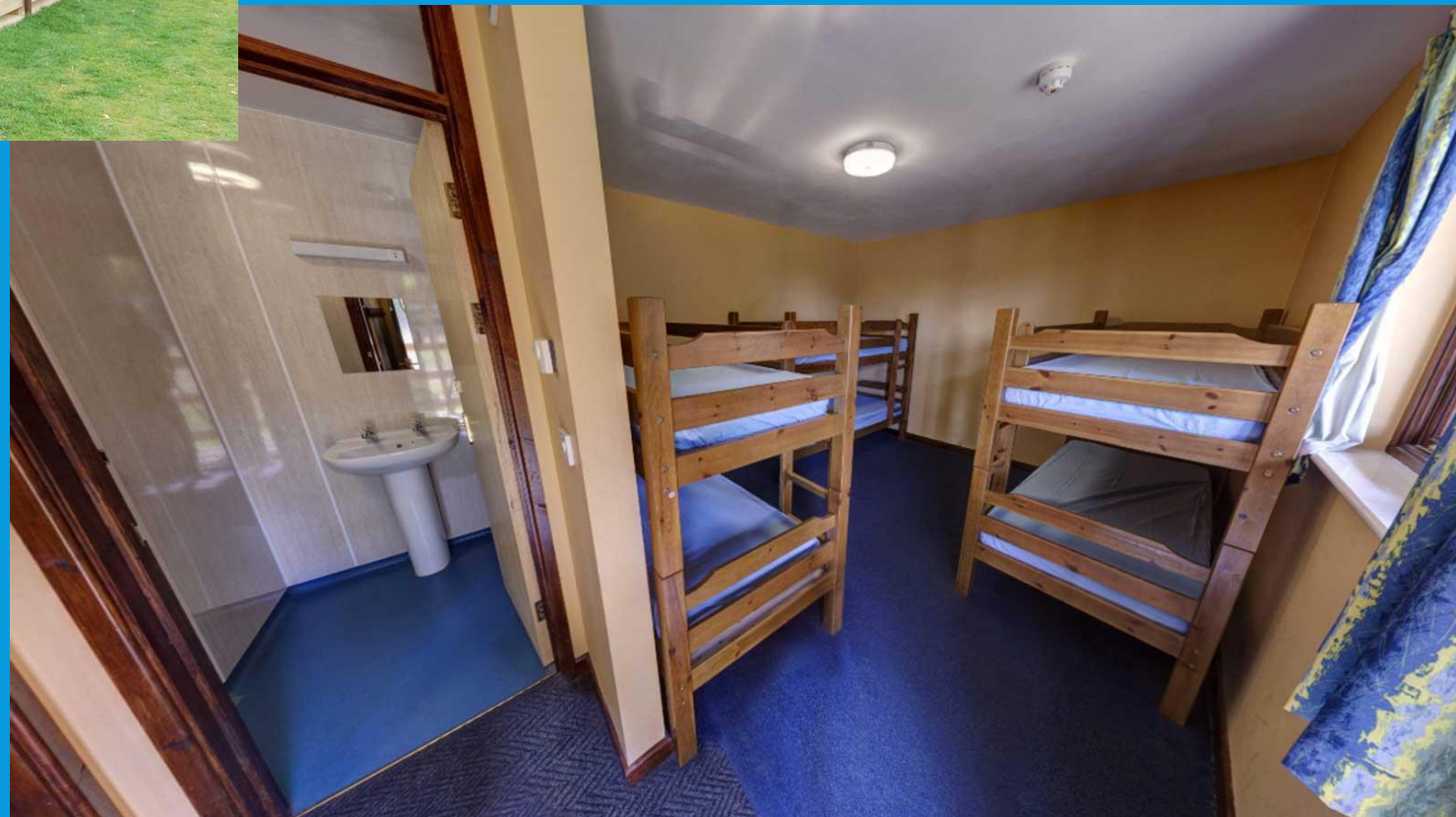
RESIDENTIAL SCHOOL TRIPS | PGL EDUCATION







ACCOMMODATION



SAMPLE ITINERARY

Wednesday - Friday (3 days / 2 nights)



	Wednesday	Thursday	Friday
07.00-09.00		Breakfast	Breakfast
09.00-10.30		Hiking	Survivor
10.30-12.00		Hiking	Abseiling
12.00-14.00	Arrive and unpack	Lunch and free time	Lunch
14.00-15.30	Archery	Orienteering	Depart centre
15.30-17.00	Fencing	Trapeze	
17.00-19.00	Dinner	Dinner	
19.00-21.00	Ambush	Disco	

Food

Enjoyable mealtimes with nutritious and tasty food.

Our meals are freshly prepared, balanced and will give your pupils plenty of energy to keep them going throughout the day.

- A mix of hot and cold meals with vegetarian options
- Self-service salad bar
- Fresh fruit with every meal
- Allergies, intolerances and special diets catered for - **see our Teacher Guide**
- Support for fussy eaters - **see our Parent Guide**



[View our sample menu](#)

COSTS

- £400 (paid in 3 instalments of £125 & £25 deposit)
- Instalments due in Feb, Mar, Apr
- Sibling / financial hardship* discounts available
- Costs based on 95% attendance

* Speak to Mr Skehan / Mrs Harper in confidence for further information

ADDITIONAL PROPOSAL

Enrichment days in school Monday & Tuesday inc. sleepover (Mon night)

- Other in-school enrichment activities and/or day trips TBC
- It is hoped / expected that Mon & Tue activities (and sleepover) will be provided free of charge TBC

FURTHER INFORMATION

<https://www.pgl.co.uk/en-gb/school-trips/resources/parent-guide/about>

For quick access, place your favorites here on the favorites bar. [Manage favorites now](#)

Everything you need to know, all in one place!

Find out what what your child needs to take with them, what they will do when they get there, what they will be eating and what to do if your child has any allergies or medical conditions we need to take into consideration. It's all here in the Parent Guide.

Click on the links to find out everything you need to know about your child's PGL trip.



Kit List



Accommodation